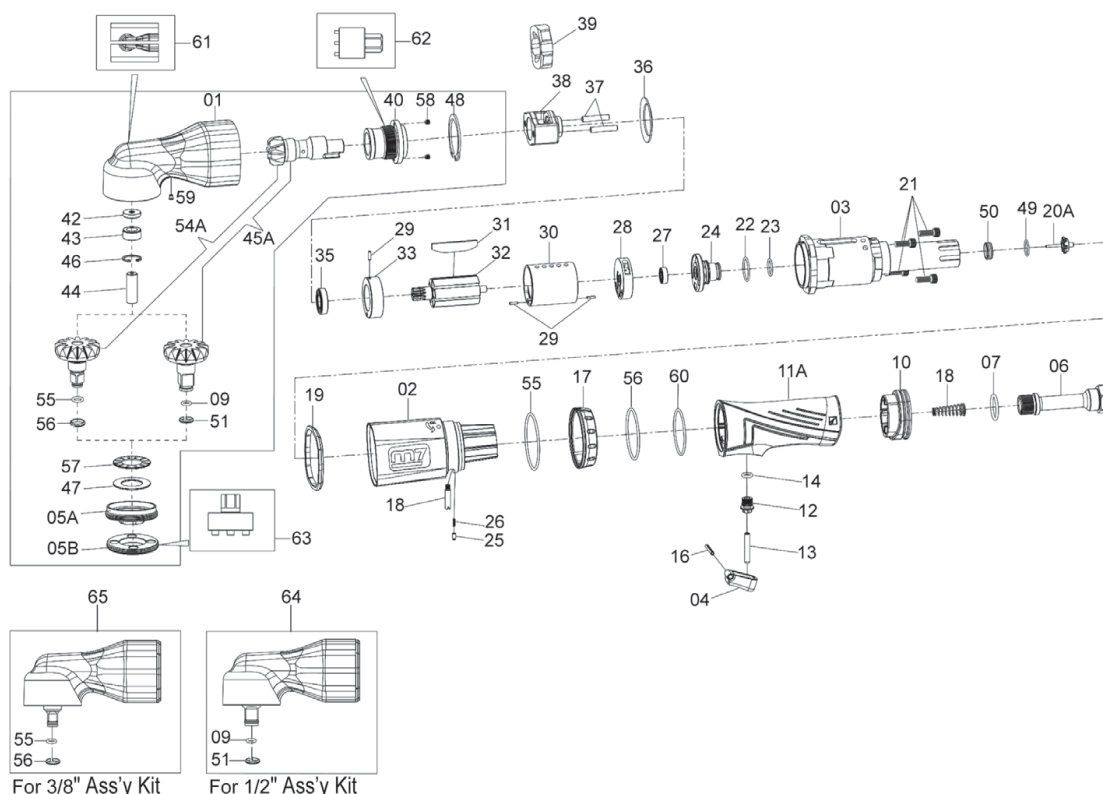




Гайковерт пневматический угловой 1/2" 339Nm

Item No: MS-499



PART NO.	DESCRIPTION	QTY
01	Hammer Case Ass'y (Ol. 42.43.59)	1 SET
02	Housing	1
03	Motor Housing	1
04	Trigger	1
05	Lock Ring (2 PCS)	1 SET
06	Air Inlet	1
07	O-Ring	1
08	Spring	1
09	O-Ring	1
10	Exhaust Deflector	1
11	Motor Housing	1
12	Bushing	1
13	Throttle Valve Plunger	1
14	O-Ring	1
16	Spring Pin	1
17	Reverse Knob	1
18	Pin	1
19	Gasket	1
20	Throttle Valve Assembly	1
21	Screw (4 PCS)	1 SET
22	O-Ring	1
23	O-Ring	1
24	Reverse Valve	1
25	Pin	1
26	Steel Ball Spring	1
27	Bearing	1
28	End Plate	1
29	Spring Pin (2 PCS)	1 SET
30	Cylinder	1
31	Rotor Blade (7 PCS)	1 SET
32	Rotor	1
33	End Plate	1
34	Spring Pin	1
35	Bearing	1

PART NO.	DESCRIPTION	QTY
35	Bearing	1
36	Washer	1
37	Hammer Pin (2 PCS)	1 SET
38	Hammer Frame	1
39	Hammer	1
40	Bushing	1
41	Work Spindle	1
42	Washer	1
43	Hammer Case Bushing	1
44	Pin	1
45	1/2" Standard Anvil (41.45.09.51)	1 SET
46	Retainer	1
47	Thrust Washer	1
48	Retainer	1
49	O-Ring	1
50	Throttle Valve Seat	1
51	Socket Retainer	1
52	O-Ring	1
53	O-Ring	1
54	3/8" Standard Anvil (41.54.55.56)	1
55	O-Ring	1
56	Socket Retainer	1
57	Needle Bearing	1
58	Screw (2 PCS)	1 SET
59	Grease Inlet	1
60	Gasket	1
61	Dismantling Tool for "Hammer Case"	1
62	Dismantling Tool for "Anvil Bushing"	1
63	Dismantling Tool for "Locking Ring"	1
64	1/2" Angle Head Ass'y for MS-499 (01.05A.05B.09.40.42.43.44.46.47.48.51.45A.57.58.59)	1 SET
65	3/8" Angle Head Ass'y for MS-399 (01.05A.05B.40.42.43.44.46.47.48.54A.55.56.57.58.59)	1 SET

Item No.	Square Drive	Bolt Capacity	Torque Range	Max Torque	Free Speed	Avg. Air Consumption	Air Pressure	Overall Length	Net Weight	Air Hose	Sound Pressure (Power)	Vibration level
	inch	inch	Nm	Nm	R.P.M	CFM	PSI	inch	LBS	inch	dBA	m/s ²
Illustrator												
MS-499	1/2"	9/16"	68-203	339	7500	2.45	90	13-3/8"	4.0	3/8"	93.0	9.9

Uncertainty K=0.5a if a ≤ 5 m/s² or K=0.4a if a > 5 m/s²