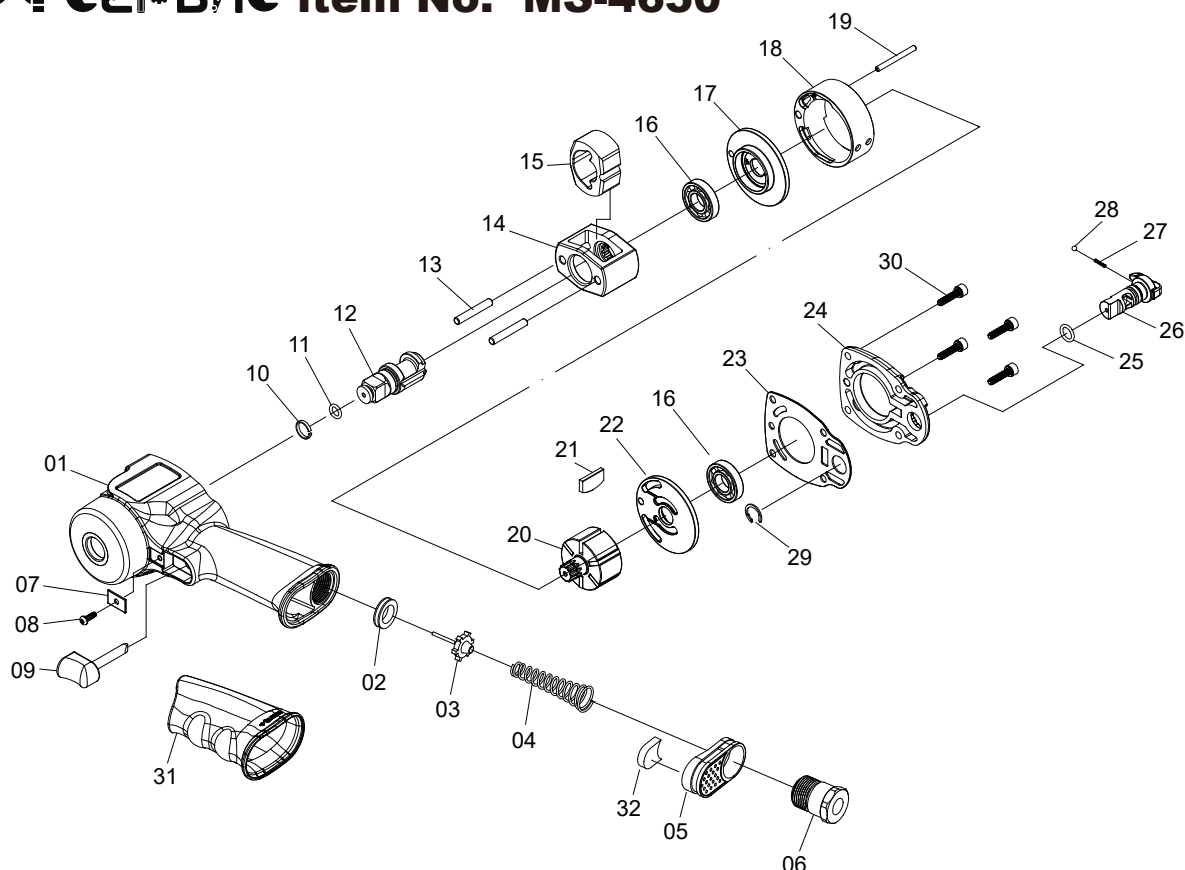


Гайковерт пневматический 1/2" 900 N/m
Item No: MS-4650



Part No.	Description	Q'ty
1	MOTOR HOUSING	1
2	THROTTLE BUSHING	1
3	VALVE STEM	1
4	SPRING	1
5	EXHAUST DEFLECTOR	1
6	INLET BUSHING	1
7	TRIGGER RETAINER	1
8	SCREW	1
9	TRIGGER	1
10	SOCKET RETAINER	1
11	RETAINER O-RING	1
	STANDARD ANVIL 1/2"	1
12	ANVIL 1/2" (WITH OIL INJECTION HOLE)	1
13	HAMMER PIN	2
14	HAMMER CAGE	1
15	HAMMER DOG	1
16	BALL BEARING	2

Part No.	Description	Q'ty
17	FRONT PLATE	1
18	CYLINDER	1
19	CYLINDER PIN	1
20	ROTOR	1
21	ROTOR BLADE	6
22	REAR PLATE	1
23	GASKET	1
24	HOUSING CAP	1
25	O-RING	1
26	REVERSE VALVE	1
27	SPRING	1
28	STEEL BALL	1
29	RETAINER	1
30	SCREW	4
31	GRIP	1
★ 32	MUFFLER COTTON (FOR QUIET VERSION)	1

Item No.	Square Drive inch	Bolt Capacity inch/mm	Torque Range Nm	Max Torque Nm	Free Speed R.P.M	Avg. Air Consumption CFM	Air Pressure PSI	Overall Length mm	Net Weight KG	Air Hose inch	Sound Pressure Level dB(A)	Vibration lev I m/s ²
MS-4650	1/2"	5/8"(16)	244-542	900	9000	4.69	90	104	1.40	3/8"	95	2.4